

DELTA MANUFACTURING INC.

SPECIALIZING IN THE FABRICATION OF COMPLEX CUSTOM PACKAGES



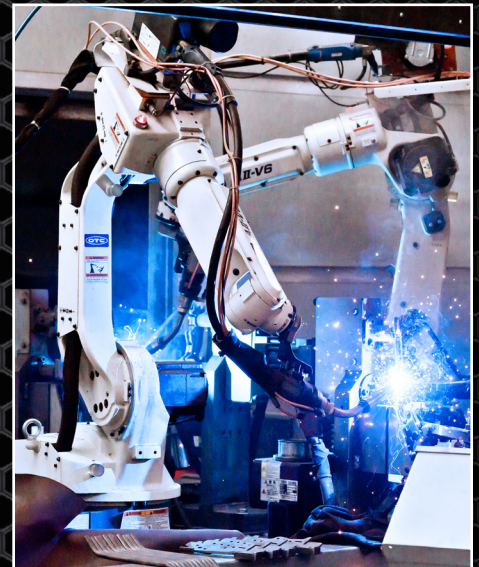
PETROCHEM • SHIPYARDS • NUCLEAR PLANTS

CAPABILITIES

**SPECIALIZING IN CUSTOM INDUSTRIAL DUCT SYSTEMS
PRECISION LASER CUTTING FOR SPECIALIZED METAL PARTS**

EQUIPMENT

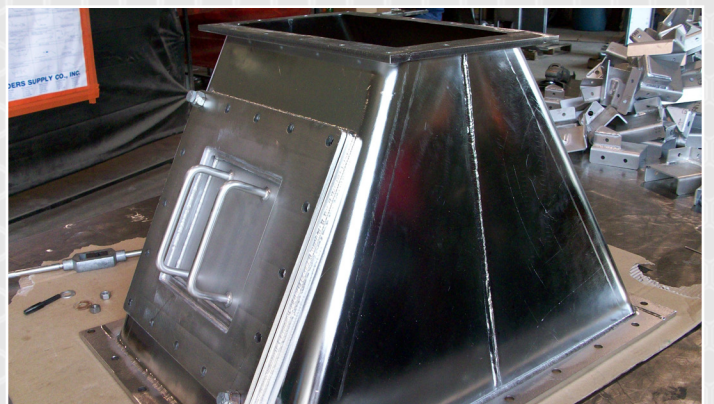
- Trumpf Trumatic 200 turret punch with SigmaNEST data system
- 2- Plasma tables with Pronest and SDS data system (200- & 400-amp CNC)
- 5- Press brakes (30-, 90-, 300- & 400-ton)
- 4- Plate shears
- 7- Plate rolls
- 3- Ironworkers (12-, 50- & 90-ton)
- 5- Overhead cranes (5- & 15-ton)
- 2- Pan brakes (10' & 4')
- 82- Welding machines
- 3- C-frame presses (200-ton & 300-ton)
- 2- Scotchman AL100U tube and pipe grinder notcher
- 12,000 lbs. vehicle lift
- 10- CNC fully-programmable welding robots
- Bystronic 4,400-watt laser with shuttle table system
- Bystronic 6kw fiber optic laser with shuttle table system
- 4 – Bystronic press brakes with segmented tooling
(2) 200-ton & (2) 80-ton & (1) robotic forming cell
- Research and development team
- 100% material traceability
- Quality control/assurance program
- Full-time safety program
- AutoCAD & SOLIDWORKS electronic drawings
- Innovative welding applications
- Weld procedures
- Welder qualifications



FACILITY

- Founded in 1983
- Deltak Manufacturing is a full-service metal fabrication facility located in Walker, La.
- Average 140 employees (predominately industrial sheet metal mechanics)
- 178,000 sq. ft. shop fabrication area located on 140 acres

PRODUCTS

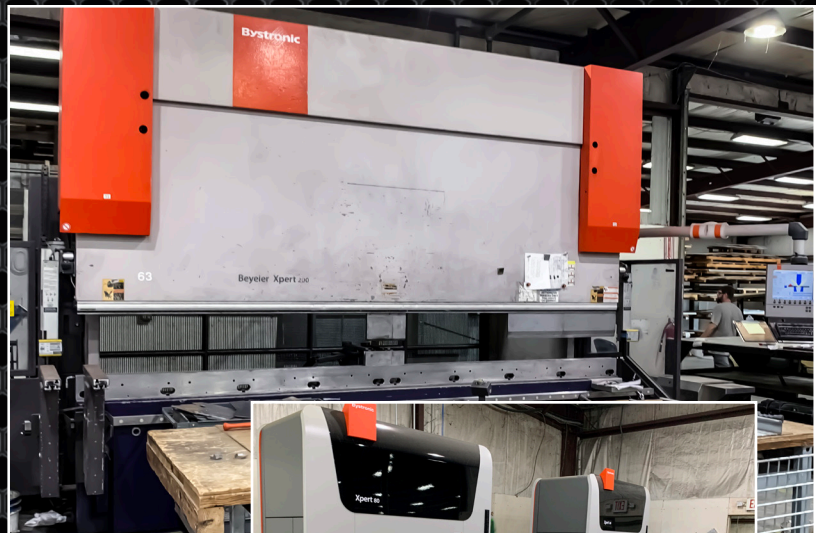


EQUIPMENT

BYSTRONIC BYSTAR 4020 LASER 4400 WATT | 6000 WATT

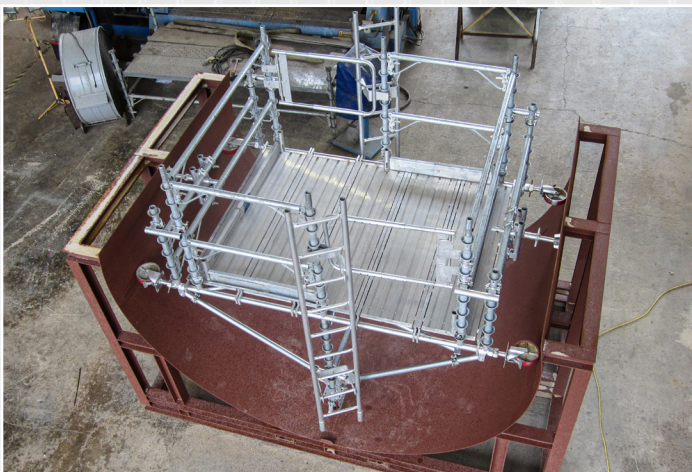



BYSTRONIC XPRT PRESS BREAK 200-TON | 80-TON



ROBOTIC FORMING CELL

NUCLEAR INDUSTRY





DELTA

MANUFACTURING INC.

www.deltakmfg.com | 225.435.7400
39455 John Lanier Rd. Walker, LA 70785